

Group production - (in tonnes) September 2020

	2020					2019					YoY Variation	
	Q1	Q2	Q3	Q4	YTD	Q1	Q2	Q3	Q4	YTD	Q3	YTD
Fresh fruit bunches produced												
Own												
Tolan Tiga Group	68 301	71 723	89 484		229 508	68 659	70 923	94 739		234 321	-5,55%	-2,05%
Umbul Mas Wisesa Group	44 038	52 346	65 546		161 930	48 282	48 018	58 994		155 294	11,11%	4,27%
Agro Muko Group	85 147	96 387	91 513		273 047	74 717	76 870	102 566		254 153	-10,78%	7,43%
South Sumatra Group	16 580	14 823	19 173		50 577	13 160	14 535	19 857		47 552	-3,44%	6,36%
Hargy Oil Palms	66 584	65 825	59 463		191 872	76 041	82 388	40 078		198 507	48,37%	-3,34%
Total own	280 650	301 105	325 179	0	906 934	280 858	292 735	316 234	0	889 827	2,83%	1,92%
Outgrowers												
Tolan Tiga Group	210	465	797		1 472	0	48	337		385	136,50%	282,34%
Umbul Mas Wisesa Group	155	389	601		1 145	132	132	234		498	156,46%	129,92%
Agro Muko Group	3 968	4 248	4 019		12 235	3 328	4 918	5 347		13 593	-24,84%	-9,99%
South Sumatra Group	1 583	1 525	2 512		5 620	931	1 062	1 265		3 258	98,59%	72,47%
Hargy Oil Palms	59 419	58 039	45 516		162 974	48 242	54 737	37 325		140 304	21,95%	16,16%
Total outgrowers	65 335	64 666	53 445	0	183 446	52 632	60 898	44 508	0	158 038	20,08%	16,08%
Total FFB produced	345 985	365 770	378 625	0	1 090 380	333 490	353 633	360 742	0	1 047 865	4,96%	4,06%
Fresh fruit bunches sold												
Tolan Tiga Group	0	0	2		2	0	0	2		2	0,00%	0,00%
Umbul Mas Wisesa Group	10 020	10 602	12 076		32 698	9 024	10 067	11 722		30 813	3,02%	6,12%
Agro Muko Group	485	469	158		1 112	694	676	631		2 001	-75,02%	-44,42%
South Sumatra Group	0	872	0		872	0	0	0		0	-	-
Total FFB sold	10 505	11 943	12 236	0	34 684	9 718	10 743	12 355	0	32 816	-0,97%	5,69%
Fresh fruit bunches processed												
Tolan Tiga Group	68 511	72 188	90 279		230 978	68 659	70 971	95 074		234 704	-5,04%	-1,59%
Umbul Mas Wisesa Group	34 172	42 134	54 071		130 377	39 389	38 083	47 506		124 978	13,82%	4,32%
Agro Muko Group	88 630	100 166	95 374		284 170	77 350	81 113	107 281		265 744	-11,10%	6,93%
South Sumatra Group	18 163	15 476	21 685		55 325	14 091	15 598	21 123		50 812	2,66%	8,88%
Hargy Oil Palms	126 003	123 864	104 979		354 846	124 283	137 126	77 403		338 811	35,63%	4,73%
Total FFB processed	335 480	353 827	366 389	0	1 055 696	323 771	342 891	348 387	0	1 015 049	5,17%	4,00%
PO extraction rate												
Tolan Tiga Group	22,6%	22,6%	22,4%		22,5%	22,4%	22,6%	22,6%		22,6%	-0,85%	-0,09%
Umbul Mas Wisesa Group	23,5%	22,9%	23,0%		23,1%	24,2%	23,1%	24,4%		24,0%	-5,67%	-3,62%
Agro Muko Group	23,8%	23,5%	22,8%		23,3%	23,8%	23,2%	24,5%		23,9%	-6,96%	-2,35%
South Sumatra Group	22,5%	21,8%	20,1%		21,4%	19,8%	20,2%	20,0%		20,0%	0,60%	6,79%
Hargy Oil Palms	23,7%	25,0%	24,6%		24,4%	22,2%	24,2%	22,2%		23,0%	10,94%	6,25%
Total PO extraction rate	23,4%	23,7%	23,1%	0,0%	23,4%	22,8%	23,3%	23,2%	0,0%	23,1%	-0,38%	1,28%
Palm Oil												
Own												
Tolan Tiga Group	15 467	16 187	20 086		51 740	15 413	16 025	21 433		52 871	-6,28%	-2,14%
Umbul Mas Wisesa Group	7 985	9 608	12 428		30 021	9 519	8 781	11 552		29 852	7,59%	0,57%
Agro Muko Group	20 148	22 482	20 910		63 540	17 642	18 081	25 219		60 942	-17,09%	4,26%
South Sumatra Group	3 734	3 030	3 888		10 652	2 687	2 861	3 981		9 529	-2,34%	11,78%
Hargy Oil Palms	15 809	16 444	14 699		46 952	16 949	20 120	8 791		45 860	67,21%	2,38%
Total own	63 142	67 752	72 011	0	202 905	62 210	65 868	70 976	0	199 054	1,46%	1,93%
Outgrowers												
Tolan Tiga Group	49	109	179		337	0	0	92		92	94,20%	265,62%
Umbul Mas Wisesa Group	36	40	35		111	32	29	56		117	-37,50%	-5,13%
Agro Muko Group	927	1 013	831		2 771	730	766	1 067		2 563	-22,10%	8,12%
South Sumatra Group	348	341	480		1 169	105	284	248		637	93,55%	83,52%
Hargy Oil Palms	14 032	14 579	11 123		39 734	10 615	13 057	8 370		32 042	32,89%	24,01%
Total outgrowers	15 391	16 083	12 648	0	44 122	11 482	14 136	9 833	0	35 451	28,63%	24,46%
Total Palm Oil	78 533	83 835	84 659	0	247 027	73 692	80 004	80 809	0	234 505	4,76%	5,34%

Palm Kernels	Q1	Q2	Q3	Q4	YTD
Own					
Tolan Tiga Group	3 795	3 697	4 918		12 410
Umbul Mas Wisesa Group	1 373	1 596	2 309		5 278
Agro Muko Group	3 817	4 741	4 481		13 039
South Sumatra Group	651	544	720		1 915
Total own	9 636	10 578	12 428	0	32 642
Outgrowers					
Tolan Tiga Group	10	23	37		70
Umbul Mas Wisesa Group	6	7	6		19
Agro Muko Group	171	218	153		542
South Sumatra Group	59	63	82		204
Total outgrowers	246	311	278	0	835
Total Palm Kernels	9 881	10 890	12 706	0	33 477

Palm Kernel Oil	Q1	Q2	Q3	Q4	YTD
Hargy Oil Palms Own	1 302	1 387	1 103		3 792
Hargy Oil Palms Outgrowers	1 158	1 129	880		3 167
Total Palm Kernel Oil	2 460	2 516	1 983	0	6 959

Rubber	Q1	Q2	Q3	Q4	YTD
Own					
Tolan Tiga Group	173	97	337		607
Melania	746	837	508		2 091
Agro Muko	498	436	325		1 259
Total own	1 417	1 370	1 170	0	3 957
Outgrowers					
Tolan Tiga Group	204	55	192		451
Total Rubber	1 621	1 425	1 362	0	4 408

Tea	Q1	Q2	Q3	Q4	YTD
Melania - Own	810	668	500		1 978
Melania - Outgrowers	0	0	19		19
Total Tea	810	668	519	0	1 997

Bananas	Q1	Q2	Q3	Q4	YTD
Azaguie 1	1 751	919	1 278		3 948
Azaguie 2	2 216	2 111	2 126		6 453
Agboville	2 785	1 767	1 956		6 508
Motobe	2 266	2 354	2 276		6 896
Total Bananas	9 019	7 150	7 636	0	23 805

Q1	Q2	Q3	Q4	YTD
3 855	3 576	5 289		12 720
1 444	1 305	1 775		4 524
3 561	3 602	5 002		12 165
543	563	804		1 910
9 403	9 046	12 870	0	31 319
0	0	19		19
4	5	8		17
145	149	211		505
21	55	48		124
170	209	286	0	665
9 573	9 255	13 156	0	31 984

Q1	Q2	Q3	Q4	YTD
1 526	1 570	858		3 954
986	1 219	613		2 818
2 512	2 789	1 471	0	6 772

Q1	Q2	Q3	Q4	YTD
259	125	275		659
963	654	377		1 994
600	467	581		1 648
1 822	1 246	1 233	0	4 301
227	69	239		535
2 049	1 315	1 472	0	4 836

Q1	Q2	Q3	Q4	YTD
738	574	448		1 760
0	0	0		0
738	574	448	0	1 760

Q1	Q2	Q3	Q4	YTD
1 440	1 065	1 155		3 660
2 497	1 814	3 101		7 412
2 349	2 455	1 477		6 281
2 466	2 642	1 825		6 933
8 752	7 976	7 558	0	24 286

Q3	YTD
-7,01%	-2,44%
30,08%	16,67%
-10,42%	7,18%
-10,45%	0,26%
-3,43%	4,22%
94,74%	268,42%
-25,00%	11,76%
-27,49%	7,33%
70,83%	64,52%
-2,80%	25,56%
-3,42%	4,67%

Q3	YTD
28,55%	-4,10%
43,56%	12,38%
34,81%	2,76%

Q3	YTD
22,55%	-7,89%
34,75%	4,86%
-44,06%	-23,60%
-5,11%	-8,00%
-19,67%	-15,70%
-7,47%	-8,85%

Q3	YTD
11,61%	12,39%
-	-
15,85%	13,47%

Q3	YTD
10,65%	7,87%
-31,44%	-12,94%
32,43%	3,61%
24,71%	-0,53%
1,03%	-1,98%

Commodity Price Data September 2020

Average market prices

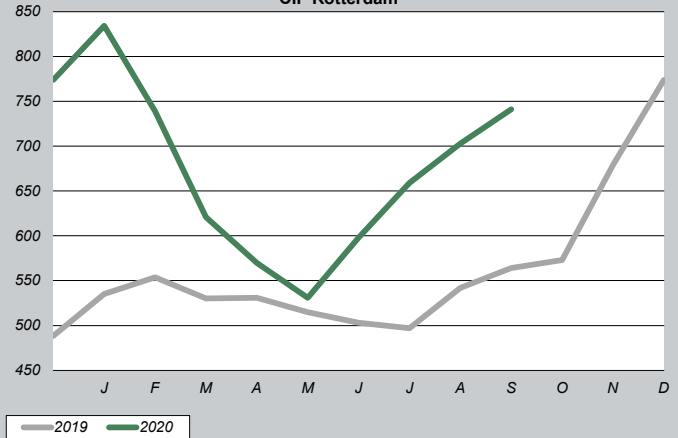
Product	YTD Q3/2020	YTD Q3/2019	YTD Q4/2019
CPO (CIF Rotterdam)* in \$/mt	666	530	566
CPKO (CIF Rotterdam)* in \$/mt	750	633	668
RSS3 (FOB Singapore)** in \$/mt	1 547	1 672	1 640
Tea (avg auct Mombasa)** in \$/mt	2 017	2 211	2 226
Bananas (CFR Europe)*** in €/mt	643	662	662

* Oil World price data

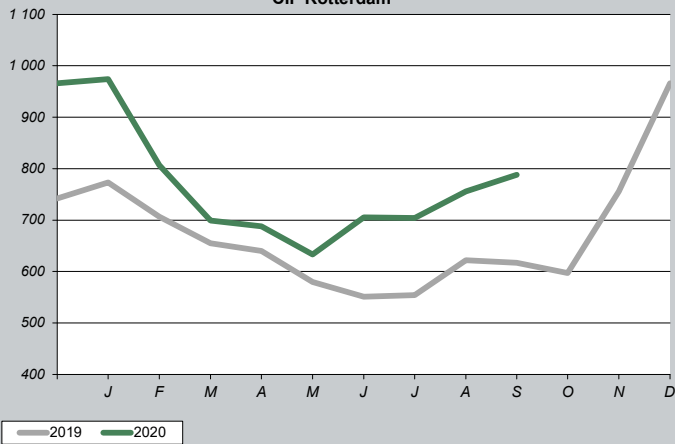
** World bank commodity price data - updated database

*** CIRAD price data (in EUR)

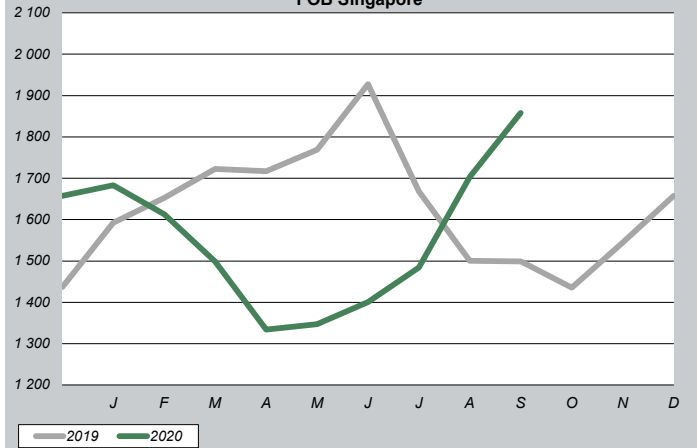
Crude Palm Oil in \$/mt CIF Rotterdam



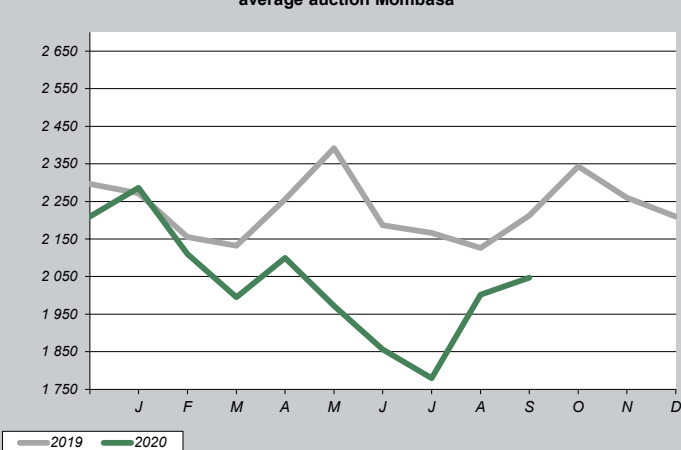
Crude Palm Kernel Oil in \$/mt CIF Rotterdam



RSS3 in \$/mt FOB Singapore



Tea in \$/mt average auction Mombasa



Bananas CFR Europe in €/mt

