

## Group production - (in tonnes)

### June 2020

Fresh fruit bunches produced	2020					2019					YoY Variation	
	Q1	Q2	Q3	Q4	YTD	Q1	Q2	Q3	Q4	YTD	Q2	YTD
<b>Own</b>												
Tolan Tiga Group	68 301	71 723			140 024	68 659	70 923			139 582	1,13%	0,32%
Umbul Mas Wisesa Group	44 038	52 346			96 384	48 282	48 018			96 300	9,01%	0,09%
Agro Muko Group	85 147	96 387			181 534	74 717	76 870			151 587	25,39%	19,76%
South Sumatra Group	16 580	14 823			31 404	13 160	14 535			27 696	1,98%	13,39%
Hargy Oil Palms	66 584	65 825			132 409	76 041	82 388			158 429	-20,10%	-16,42%
<b>Total own</b>	<b>280 650</b>	<b>301 105</b>	<b>0</b>	<b>0</b>	<b>581 755</b>	<b>280 858</b>	<b>292 735</b>	<b>0</b>	<b>0</b>	<b>573 593</b>	<b>2,86%</b>	<b>1,42%</b>
<b>Outgrowers</b>												
Tolan Tiga Group	210	465			675	0	48			48	868,75%	1306,25%
Umbul Mas Wisesa Group	155	389			544	132	132			264	194,70%	106,33%
Agro Muko Group	3 968	4 248			8 216	3 328	4 918			8 246	-13,62%	-0,36%
South Sumatra Group	1 583	1 525			3 108	931	1 062			1 994	43,54%	59,90%
Hargy Oil Palms	59 419	58 039			117 458	48 242	54 737			102 979	6,03%	14,06%
<b>Total outgrowers</b>	<b>65 335</b>	<b>64 666</b>	<b>0</b>	<b>0</b>	<b>130 001</b>	<b>52 632</b>	<b>60 898</b>	<b>0</b>	<b>0</b>	<b>113 530</b>	<b>6,19%</b>	<b>14,51%</b>
<b>Total FFB produced</b>	<b>345 985</b>	<b>365 770</b>	<b>0</b>	<b>0</b>	<b>711 755</b>	<b>333 490</b>	<b>353 633</b>	<b>0</b>	<b>0</b>	<b>687 123</b>	<b>3,43%</b>	<b>3,58%</b>
<b>Fresh fruit bunches sold</b>	<b>Q1</b>	<b>Q2</b>	<b>Q3</b>	<b>Q4</b>	<b>YTD</b>	<b>Q1</b>	<b>Q2</b>	<b>Q3</b>	<b>Q4</b>	<b>YTD</b>	<b>Q2</b>	<b>YTD</b>
Tolan Tiga Group	0	0			0	0	0			0	-	-
Umbul Mas Wisesa Group	10 020	10 602			20 622	9 024	10 067			19 091	5,31%	8,02%
Agro Muko Group	485	469			954	694	676			1 370	-30,53%	-30,32%
South Sumatra Group	0	872			872	0	0			0	-	-
<b>Total FFB sold</b>	<b>10 505</b>	<b>11 943</b>	<b>0</b>	<b>0</b>	<b>22 449</b>	<b>9 718</b>	<b>10 743</b>	<b>0</b>	<b>0</b>	<b>20 461</b>	<b>11,18%</b>	<b>9,72%</b>
<b>Fresh fruit bunches processed</b>	<b>Q1</b>	<b>Q2</b>	<b>Q3</b>	<b>Q4</b>	<b>YTD</b>	<b>Q1</b>	<b>Q2</b>	<b>Q3</b>	<b>Q4</b>	<b>YTD</b>	<b>Q2</b>	<b>YTD</b>
Tolan Tiga Group	68 511	72 188			140 699	68 659	70 971			139 630	1,71%	0,77%
Umbul Mas Wisesa Group	34 172	42 134			76 306	39 389	38 083			77 472	10,64%	-1,51%
Agro Muko Group	88 630	100 166			188 796	77 350	81 113			158 463	23,49%	19,14%
South Sumatra Group	18 163	15 476			33 639	14 091	15 598			29 689	-0,78%	13,30%
Hargy Oil Palms	126 003	123 864			249 867	124 283	137 126			261 408	-9,67%	-4,42%
<b>Total FFB processed</b>	<b>335 480</b>	<b>353 827</b>	<b>0</b>	<b>0</b>	<b>689 306</b>	<b>323 771</b>	<b>342 891</b>	<b>0</b>	<b>0</b>	<b>666 662</b>	<b>3,19%</b>	<b>3,40%</b>
<b>PO extraction rate</b>	<b>Q1</b>	<b>Q2</b>	<b>Q3</b>	<b>Q4</b>	<b>YTD</b>	<b>Q1</b>	<b>Q2</b>	<b>Q3</b>	<b>Q4</b>	<b>YTD</b>	<b>Q2</b>	<b>YTD</b>
Tolan Tiga Group	22,6%	22,6%			22,6%	22,4%	22,6%			22,5%	-0,02%	0,42%
Umbul Mas Wisesa Group	23,5%	22,9%			23,2%	24,2%	23,1%			23,7%	-1,01%	-2,30%
Agro Muko Group	23,8%	23,5%			23,6%	23,8%	23,2%			23,5%	0,95%	0,51%
South Sumatra Group	22,5%	21,8%			22,2%	19,8%	20,2%			20,0%	8,05%	10,79%
Hargy Oil Palms	23,7%	25,0%			24,4%	22,2%	24,2%			23,2%	3,52%	4,83%
<b>Total PO extraction rate</b>	<b>23,4%</b>	<b>23,7%</b>	<b>0,0%</b>	<b>0,0%</b>	<b>23,6%</b>	<b>22,8%</b>	<b>23,3%</b>	<b>0,0%</b>	<b>0,0%</b>	<b>23,1%</b>	<b>1,55%</b>	<b>2,17%</b>
<b>Palm Oil</b>	<b>Q1</b>	<b>Q2</b>	<b>Q3</b>	<b>Q4</b>	<b>YTD</b>	<b>Q1</b>	<b>Q2</b>	<b>Q3</b>	<b>Q4</b>	<b>YTD</b>	<b>Q2</b>	<b>YTD</b>
<b>Own</b>												
Tolan Tiga Group	15 467	16 187			31 654	15 413	16 025			31 438	1,01%	0,69%
Umbul Mas Wisesa Group	7 985	9 608			17 593	9 519	8 781			18 300	9,42%	-3,86%
Agro Muko Group	20 148	22 482			42 630	17 642	18 081			35 723	24,34%	19,33%
South Sumatra Group	3 734	3 030			6 764	2 687	2 861			5 548	5,92%	21,92%
Hargy Oil Palms	15 809	16 444			32 253	16 949	20 120			37 069	-18,27%	-12,99%
<b>Total own</b>	<b>63 142</b>	<b>67 752</b>	<b>0</b>	<b>0</b>	<b>130 894</b>	<b>62 210</b>	<b>65 868</b>	<b>0</b>	<b>0</b>	<b>128 078</b>	<b>2,86%</b>	<b>2,20%</b>
<b>Outgrowers</b>												
Tolan Tiga Group	49	109			158	0	0			0	-	-
Umbul Mas Wisesa Group	36	40			76	32	29			61	39,45%	24,59%
Agro Muko Group	927	1 013			1 940	730	766			1 496	32,23%	29,68%
South Sumatra Group	348	341			689	105	284			389	20,18%	77,12%
Hargy Oil Palms	14 032	14 579			28 611	10 615	13 057			23 672	11,66%	20,86%
<b>Total outgrowers</b>	<b>15 391</b>	<b>16 083</b>	<b>0</b>	<b>0</b>	<b>31 474</b>	<b>11 482</b>	<b>14 136</b>	<b>0</b>	<b>0</b>	<b>25 618</b>	<b>13,77%</b>	<b>22,86%</b>
<b>Total Palm Oil</b>	<b>78 533</b>	<b>83 835</b>	<b>0</b>	<b>0</b>	<b>162 368</b>	<b>73 692</b>	<b>80 004</b>	<b>0</b>	<b>0</b>	<b>153 696</b>	<b>4,79%</b>	<b>5,64%</b>

<b>Palm Kernels</b>	<b>Q1</b>	<b>Q2</b>	<b>Q3</b>	<b>Q4</b>	<b>YTD</b>
<b>Own</b>					
Tolan Tiga Group	3 795	3 697			7 492
Umbul Mas Wisesa Group	1 373	1 596			2 969
Agro Muko Group	3 817	4 741			8 558
South Sumatra Group	651	544			1 195
<b>Total own</b>	<b>9 636</b>	<b>10 578</b>	<b>0</b>	<b>0</b>	<b>20 214</b>
<b>Outgrowers</b>					
Tolan Tiga Group	10	23			33
Umbul Mas Wisesa Group	6	7			13
Agro Muko Group	171	218			389
South Sumatra Group	59	63			122
<b>Total outgrowers</b>	<b>246</b>	<b>311</b>	<b>0</b>	<b>0</b>	<b>557</b>
<b>Total Palm Kernels</b>	<b>9 881</b>	<b>10 890</b>	<b>0</b>	<b>0</b>	<b>20 771</b>

<b>Palm Kernel Oil</b>	<b>Q1</b>	<b>Q2</b>	<b>Q3</b>	<b>Q4</b>	<b>YTD</b>
Hargy Oil Palms Own	1 302	1 387			2 689
Hargy Oil Palms Outgrowers	1 158	1 129			2 287
<b>Total Palm Kernel Oil</b>	<b>2 460</b>	<b>2 516</b>	<b>0</b>	<b>0</b>	<b>4 976</b>

<b>Rubber</b>	<b>Q1</b>	<b>Q2</b>	<b>Q3</b>	<b>Q4</b>	<b>YTD</b>
<b>Own</b>					
Tolan Tiga Group	173	97			270
Melania	746	837			1 583
Agro Muko	498	436			934
<b>Total own</b>	<b>1 417</b>	<b>1 370</b>	<b>0</b>	<b>0</b>	<b>2 787</b>
<b>Outgrowers</b>					
Tolan Tiga Group	204	55			259
<b>Total Rubber</b>	<b>1 621</b>	<b>1 425</b>	<b>0</b>	<b>0</b>	<b>3 046</b>

<b>Tea</b>	<b>Q1</b>	<b>Q2</b>	<b>Q3</b>	<b>Q4</b>	<b>YTD</b>
Melania	810	668			1 478
<b>Total Tea</b>	<b>810</b>	<b>668</b>	<b>0</b>	<b>0</b>	<b>1 478</b>

<b>Bananas</b>	<b>Q1</b>	<b>Q2</b>	<b>Q3</b>	<b>Q4</b>	<b>YTD</b>
Azaguie 1	1 751	919			2 670
Azaguie 2	2 216	2 111			4 327
Agboville	2 785	1 767			4 552
Motobe	2 266	2 354			4 620
<b>Total Bananas</b>	<b>9 019</b>	<b>7 150</b>	<b>0</b>	<b>0</b>	<b>16 169</b>

<b>Q1</b>	<b>Q2</b>	<b>Q3</b>	<b>Q4</b>	<b>YTD</b>	<b>Q2</b>	<b>YTD</b>
3 855	3 576			7 431	3,39%	0,82%
1 444	1 305			2 749	22,31%	8,00%
3 561	3 602			7 163	31,62%	19,48%
543	563			1 106	-3,34%	8,05%
<b>9 403</b>	<b>9 046</b>	<b>0</b>	<b>0</b>	<b>18 449</b>	<b>16,94%</b>	<b>9,57%</b>
0	0			0	-	-
4	5			9	41,31%	44,44%
145	149			294	46,48%	32,31%
21	55			76	15,22%	60,53%
<b>170</b>	<b>209</b>	<b>0</b>	<b>0</b>	<b>379</b>	<b>49,02%</b>	<b>46,97%</b>
<b>9 573</b>	<b>9 255</b>	<b>0</b>	<b>0</b>	<b>18 828</b>	<b>17,66%</b>	<b>10,32%</b>

<b>Q1</b>	<b>Q2</b>	<b>Q3</b>	<b>Q4</b>	<b>YTD</b>	<b>Q2</b>	<b>YTD</b>
1 526	1 570			3 096	-11,66%	-13,15%
986	1 219			2 205	-7,38%	3,72%
<b>2 512</b>	<b>2 789</b>	<b>0</b>	<b>0</b>	<b>5 301</b>	<b>-9,79%</b>	<b>-6,13%</b>

<b>Q1</b>	<b>Q2</b>	<b>Q3</b>	<b>Q4</b>	<b>YTD</b>	<b>Q2</b>	<b>YTD</b>
259	125			384	-22,40%	-29,69%
963	654			1 617	27,98%	-2,10%
600	467			1 067	-6,64%	-12,46%
<b>1 822</b>	<b>1 246</b>	<b>0</b>	<b>0</b>	<b>3 068</b>	<b>9,95%</b>	<b>-9,16%</b>
227	69			296	-20,29%	-12,50%
<b>2 049</b>	<b>1 315</b>	<b>0</b>	<b>0</b>	<b>3 364</b>	<b>8,37%</b>	<b>-9,45%</b>

<b>Q1</b>	<b>Q2</b>	<b>Q3</b>	<b>Q4</b>	<b>YTD</b>	<b>Q2</b>	<b>YTD</b>
738	574			1 312	16,38%	12,65%
<b>738</b>	<b>574</b>	<b>0</b>	<b>0</b>	<b>1 312</b>	<b>16,38%</b>	<b>12,65%</b>

<b>Q1</b>	<b>Q2</b>	<b>Q3</b>	<b>Q4</b>	<b>YTD</b>	<b>Q2</b>	<b>YTD</b>
1 440	1 065			2 505	-13,74%	6,59%
2 497	1 814			4 311	16,37%	0,37%
2 349	2 455			4 804	-28,04%	-5,25%
2 466	2 642			5 108	-10,92%	-9,55%
<b>8 752</b>	<b>7 976</b>	<b>0</b>	<b>0</b>	<b>16 728</b>	<b>-10,36%</b>	<b>-3,34%</b>

## Commodity Price Data

### June 2020

#### Average market prices

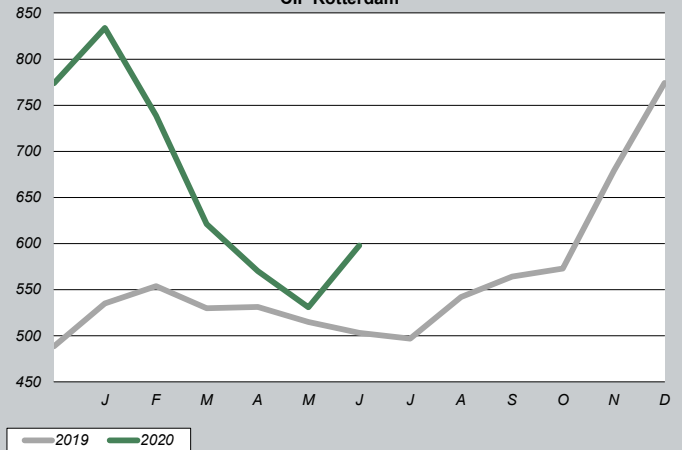
Product		YTD Q2/2020	YTD Q2/2019	YTD Q4/2019
CPO (CIF Rotterdam)*	in \$/mt	649	528	566
CPKO (CIF Rotterdam)*	in \$/mt	751	651	668
RSS3 (FOB Singapore)**	in \$/mt	1 479	1 730	1 640
Tea (avg auct Mombasa)**	in \$/mt	2 053	2 232	2 226
Bananas (CFR Europe)***	in €/mt	671	681	662

\* Oil World price data

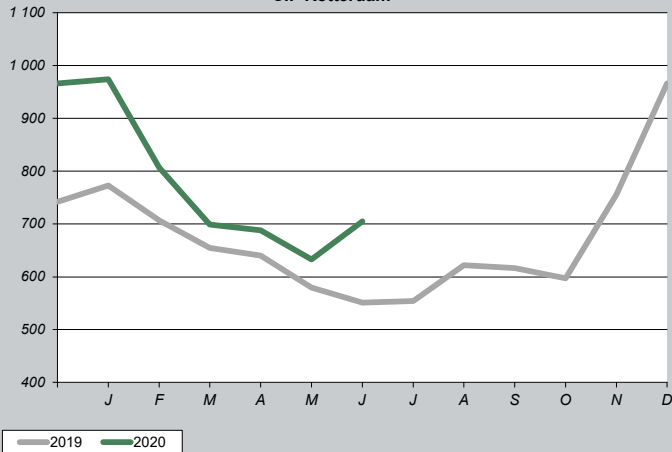
\*\* World bank commodity price data - updated database

\*\*\* CIRAD price data (in EUR)

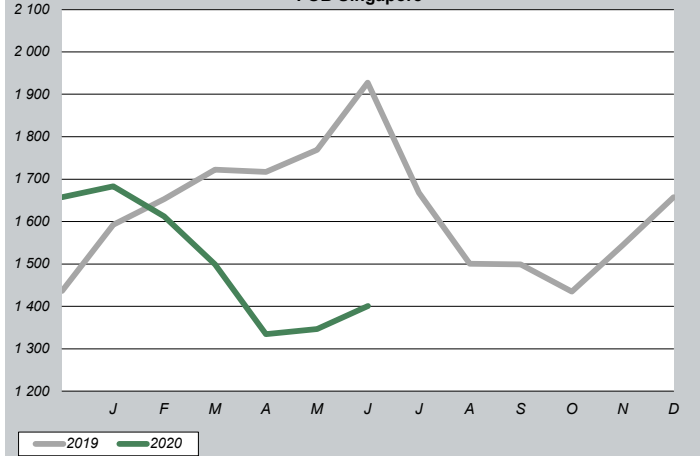
**Crude Palm Oil in \$/mt  
CIF Rotterdam**



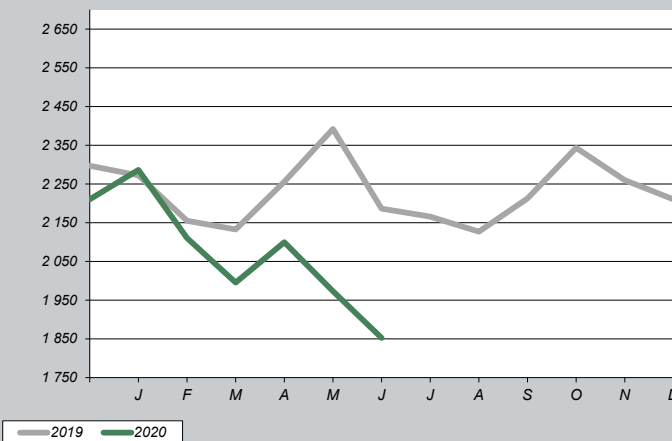
**Crude Palm Kernel Oil in \$/mt  
CIF Rotterdam**



**RSS3 in \$/mt  
FOB Singapore**



**Tea in \$/mt  
average auction Mombasa**



**Bananas CFR Europe in €/mt**

