

Group production - (in tonnes)

June 2019

	2019					2018					YoY Variation	
	Q1	Q2	Q3	Q4	YTD	Q1	Q2	Q3	Q4	YTD	Q2	YTD
Fresh fruit bunches produced												
Own												
Tolan Tiga Group	68 659	70 923			139 582	73 557	71 301			144 858	-0,53%	-3,64%
Umbul Mas Wisesa Group	48 282	48 018			96 300	46 742	50 651			97 393	-5,20%	-1,12%
Agro Muko Group	74 717	76 870			151 587	84 280	90 635			174 915	-15,19%	-13,34%
South Sumatra Group	13 160	14 535			27 695	6 548	8 761			15 309	65,90%	80,91%
Hargy Oil Palms	76 041	82 388			158 429	84 071	93 506			177 577	-11,89%	-10,78%
Total own	280 858	292 735	0	0	573 593	295 198	314 854	0	0	610 052	-7,03%	-5,98%
Outgrowers												
Tolan Tiga Group	0	48			48	0	0			0	-	-
Umbul Mas Wisesa Group	132	132			264	0	18			18	635,26%	1366,67%
Agro Muko Group	3 328	4 918			8 246	3 441	3 501			6 942	40,49%	18,78%
South Sumatra Group	931	1 062			1 993	517	644			1 161	64,89%	71,66%
Hargy Oil Palms	48 242	54 737			102 979	46 628	64 674			111 302	-15,36%	-7,48%
Total outgrowers	52 632	60 898	0	0	113 530	50 586	68 837	0	0	119 423	-11,53%	-4,93%
Total FFB produced	333 490	353 633	0	0	687 123	345 784	383 691	0	0	729 475	-7,83%	-5,81%
Fresh fruit bunches sold												
Tolan Tiga Group	0	0			0	0	0			0	-	-
Umbul Mas Wisesa Group	9 024	10 067			19 091	7 674	7 710			15 384	30,57%	24,10%
Agro Muko Group	0	1 370			1 370	0	0			0	-	-
South Sumatra Group	0	0			0	1 191	2 614			1 191	-100,00%	-100,00%
Total FFB sold	9 024	11 437	0	0	20 461	8 865	10 324	0	0	16 575	10,78%	23,44%
Fresh fruit bunches processed												
Tolan Tiga Group	68 659	70 971			139 630	73 557	71 301			144 858	-0,46%	-3,61%
Umbul Mas Wisesa Group	39 389	38 084			77 473	39 068	42 959			82 027	-11,35%	-5,55%
Agro Muko Group	78 044	80 419			158 463	87 721	94 136			181 857	-14,57%	-12,86%
South Sumatra Group	14 091	15 597			29 688	5 874	6 791			12 665	129,67%	134,41%
Hargy Oil Palms	124 283	137 125			261 408	130 699	158 180			288 879	-13,31%	-9,51%
Total FFB processed	324 465	342 197	0	0	666 662	336 919	373 367	0	0	710 286	-8,35%	-6,14%
PO extraction rate												
Tolan Tiga Group	22,4%	22,6%			22,5%	22,7%	22,5%			22,6%	0,17%	-0,45%
Umbul Mas Wisesa Group	24,2%	23,1%			23,7%	24,5%	23,9%			24,1%	-3,17%	-1,58%
Agro Muko Group	23,5%	23,4%			23,5%	23,2%	22,8%			23,0%	2,67%	2,15%
South Sumatra Group	19,8%	20,2%			20,0%	15,1%	19,7%			17,6%	2,27%	13,88%
Hargy Oil Palms	22,2%	24,2%			23,2%	23,5%	24,6%			24,1%	-1,51%	-3,51%
Total PO extraction rate	22,7%	23,4%	0	0	23,1%	23,2%	23,6%	0	0	23,4%	-0,82%	-1,47%
Palm Oil												
Own												
Tolan Tiga Group	15 413	16 025			31 438	16 689	16 072			32 761	-0,29%	-4,04%
Umbul Mas Wisesa Group	9 519	8 781			18 300	9 572	10 259			19 831	-14,41%	-7,72%
Agro Muko Group	17 642	18 081			35 723	19 576	20 737			40 313	-12,81%	-11,39%
South Sumatra Group	2 687	2 861			5 548	821	1 158			1 979	147,06%	180,34%
Hargy Oil Palms	16 949	20 120			37 069	19 851	23 077			42 928	-12,81%	-13,65%
Total own	62 210	65 868	0	0	128 078	66 509	71 303	0	0	137 812	-7,62%	-7,06%
Outgrowers												
Tolan Tiga Group	0	0			0	0	0			0	-	-
Umbul Mas Wisesa Group	32	29			61	0	4			4	625,00%	1425,00%
Agro Muko Group	730	766			1 496	750	750			1 500	2,13%	-0,27%
South Sumatra Group	105	284			389	64	181			245	56,91%	58,78%
Hargy Oil Palms	10 615	13 057			23 672	10 862	15 779			26 641	-17,25%	-11,14%
Total outgrowers	11 482	14 136	0	0	25 618	11 676	16 714	0	0	28 390	-15,42%	-9,76%
Total Palm Oil	73 692	80 004	0	0	153 696	78 185	88 017	0	0	166 202	-9,10%	-7,52%

Palm Kernels	Q1	Q2	Q3	Q4	YTD
Own					
Tolan Tiga Group	3 855	3 576			7 431
Umbul Mas Wisesa Group	1 444	1 305			2 749
Agro Muko Group	3 561	3 602			7 163
South Sumatra Group	543	563			1 106
Total own	9 403	9 046	0	0	18 449
Outgrowers					
Tolan Tiga Group	0	0			0
Umbul Mas Wisesa Group	4	5			9
Agro Muko Group	145	149			294
South Sumatra Group	21	55			76
Total outgrowers	170	209	0	0	379
Total Palm Kernels	9 573	9 255	0	0	18 828

Palm Kernel Oil	Q1	Q2	Q3	Q4	YTD
Hargy Oil Palms Own	1 526	1 570			3 096
Hargy Oil Palms Outgrowers	986	1 219			2 205
Total Palm Kernel Oil	2 512	2 789	0	0	5 301

Rubber	Q1	Q2	Q3	Q4	YTD
Own					
Tolan Tiga Group*	259	125			384
Melania	963	654			1 617
Agro Muko	600	467			1 067
Total own	1 822	1 246	0	0	3 068
Outgrowers					
Tolan Tiga Group*	227	69			296
Total Rubber	2 049	1 315	0	0	3 364

Tea	Q1	Q2	Q3	Q4	YTD
Melania	738	574			1 312
Total Tea	738	574	0	0	1 312

Bananas	Q1	Q2	Q3	Q4	YTD
Azaguie 1	1 440	1 065			2 505
Azaguie 2	2 497	1 814			4 311
Agboville	2 349	2 455			4 804
Motobe	2 466	2 642			5 108
Total Bananas	8 752	7 976	0	0	16 728

Q1	Q2	Q3	Q4	YTD
4 118	3 927			8 045
1 576	1 642			3 218
4 310	4 369			8 679
213	265			478
10 217	10 203	0	0	20 420
0	0			0
0	1			1
152	149			301
16	40			56
168	190	0	0	358
10 385	10 393	0	0	20 778

Q1	Q2	Q3	Q4	YTD
1 616	1 921			3 537
926	1 377			2 303
2 542	3 298	0	0	5 840

Q1	Q2	Q3	Q4	YTD
363	200			563
965	885			1 850
686	622			1 308
2 014	1 707	0	0	3 721
280	124			404
2 294	1 831	0	0	4 125

Q1	Q2	Q3	Q4	YTD
595	590			1 185
595	590	0	0	1 185

Q1	Q2	Q3	Q4	YTD
1 345	755			2 100
2 395	1 932			4 327
2 038	1 872			3 910
1 538	1 426			2 964
7 316	5 985	0	0	13 301

Q2	YTD
-8,94%	-7,63%
-20,52%	-14,57%
-17,56%	-17,47%
112,45%	131,38%
-11,34%	-9,65%
-	-
400,00%	800,00%
0,00%	-2,33%
37,50%	35,71%
10,00%	5,87%
-10,95%	-9,38%

Q2	YTD
-18,27%	-12,47%
-11,47%	-4,26%
-15,43%	-9,23%

Q2	YTD
-37,50%	-31,79%
-26,10%	-12,59%
-24,92%	-18,43%
-27,01%	-17,55%
-44,35%	-26,73%
-28,18%	-18,45%

Q2	YTD
-2,71%	10,72%
-2,71%	10,72%

Q2	YTD
41,06%	19,29%
-6,11%	-0,37%
31,14%	22,86%
85,27%	72,33%
33,27%	25,76%

*Tolan Tiga Group rubber production have been split into own and outgrower production. The outgrower production consists of production from PT Timbang Deli. The figures of prior year have been restated.

Commodity Price Data

June 2019

Average market prices

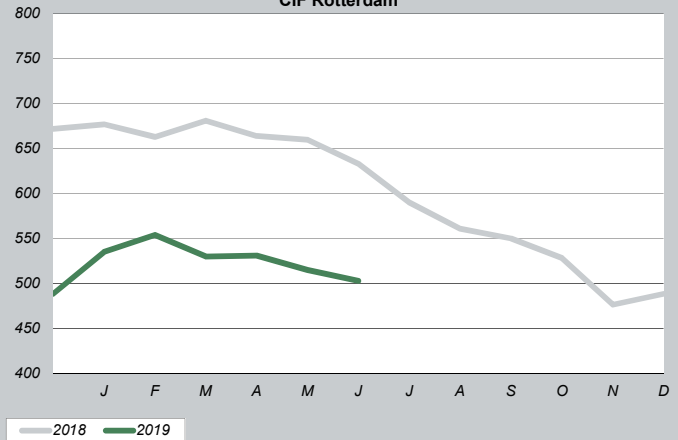
Product		YTD Q2/2019	YTD Q2/2018	YTD Q4/2018
CPO (CIF Rotterdam)*	in \$/mt	528	663	598
CPKO (CIF Rotterdam)*	in \$/mt	651	1 039	921
RSS3 (FOB Singapore)**	in \$/mt	1 730	1 698	1 565
Tea (avg auct Mombasa)**	in \$/mt	2 232	2 766	2 579
Bananas (CFR Europe)***	in €/mt	681	695	647

* Oil World price data

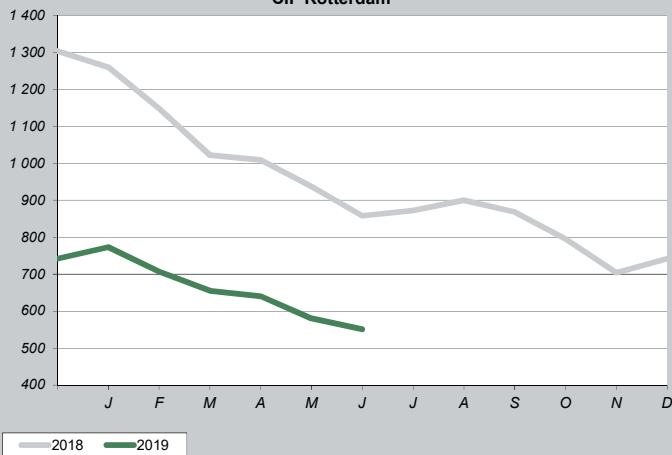
** World bank commodity price data - updated database

*** CIRAD price data (in EUR)

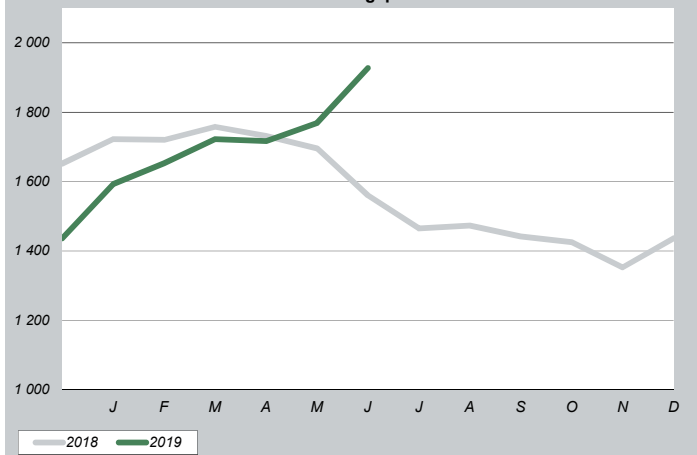
Crude Palm Oil in \$/mt CIF Rotterdam



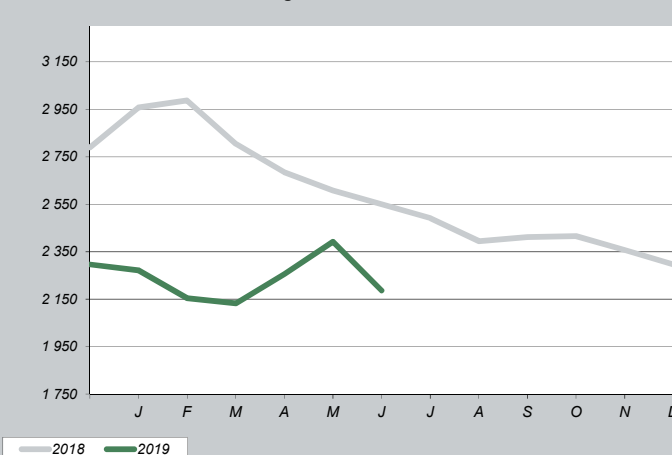
Crude Palm Kernel Oil in \$/mt CIF Rotterdam



RSS3 in \$/mt FOB Singapore



Tea in \$/mt average auction Mombasa



Bananas CFR Europe in €/mt

