

Group production - (in tonnes)
March 2019

	2019					2018					YoY Variation	
	Q1	Q2	Q3	Q4	YTD	Q1	Q2	Q3	Q4	YTD	Q1	YTD
Fresh fruit bunches produced												
Own												
Tolan Tiga Group	68 659				68 659	73 557				73 557	-6,66%	-6,66%
Umbul Mas Wisesa Group	48 282				48 282	46 742				46 742	3,29%	3,29%
Agro Muko Group	74 717				74 717	84 280				84 280	-11,35%	-11,35%
South Sumatra Group	13 160				13 160	6 548				6 548	100,98%	100,98%
Hargy Oil Palms	76 041				76 041	84 071				84 071	-9,55%	-9,55%
Total own	280 858	0	0	0	280 858	295 198	0	0	0	295 198	-4,86%	-4,86%
Outgrowers												
Tolan Tiga Group	0				0	0				0	-	-
Umbul Mas Wisesa Group	132				132	0				0	-	-
Agro Muko Group	3 328				3 328	3 441				3 441	-3,30%	-3,30%
South Sumatra Group	931				931	517				517	80,10%	80,10%
Hargy Oil Palms	48 242				48 242	46 628				46 628	3,46%	3,46%
Total outgrowers	52 632	0	0	0	52 632	50 586	0	0	0	50 586	4,05%	4,05%
Total FFB produced	333 490	0	0	0	333 490	345 784	0	0	0	345 784	-3,56%	-3,56%
Fresh fruit bunches sold												
Tolan Tiga Group	0				0	0				0	-	-
Umbul Mas Wisesa Group	9 024				9 024	7 674				7 674	17,60%	17,60%
South Sumatra Group	0				0	1 191				1 191	-100,00%	-100,00%
Total FFB sold	9 024	0	0	0	9 024	8 865	0	0	0	8 865	1,80%	1,80%
Fresh fruit bunches processed												
Tolan Tiga Group	68 659				68 659	73 557				73 557	-6,66%	-6,66%
Umbul Mas Wisesa Group	39 389				39 389	39 068				39 068	0,82%	0,82%
Agro Muko Group	78 044				78 044	87 721				87 721	-11,03%	-11,03%
South Sumatra Group	14 091				14 091	5 874				5 874	139,89%	139,89%
Hargy Oil Palms	124 283				124 283	130 699				130 699	-4,91%	-4,91%
Total FFB processed	324 465	0	0	0	324 465	336 919	0	0	0	336 919	-3,70%	-3,70%
PO extraction rate												
Tolan Tiga Group	22,4%				22,4%	22,7%				22,7%	-1,06%	-1,06%
Umbul Mas Wisesa Group	24,2%				24,2%	24,5%				24,4%	-1,03%	-0,63%
Agro Muko Group	23,5%				23,5%	23,2%				23,2%	1,59%	1,59%
Hargy Oil Palms	22,2%				22,2%	23,5%				23,5%	-5,62%	-5,62%
South Sumatra Group	19,8%				19,8%	15,1%				15,1%	31,51%	31,51%
Total PO extraction rate	22,7%				22,7%	23,2%				23,2%	-2,13%	-2,13%
Palm Oil												
Own												
Tolan Tiga Group	15 413				15 413	16 689				16 689	-7,65%	-7,65%
Umbul Mas Wisesa Group	9 519				9 519	9 572				9 572	-0,55%	-0,55%
Agro Muko Group	17 642				17 642	19 576				19 576	-9,88%	-9,88%
South Sumatra Group	2 687				2 687	821				821	227,28%	227,28%
Hargy Oil Palms	16 949				16 949	19 851				19 851	-14,62%	-14,62%
Total own	62 210	0	0	0	62 210	66 509	0	0	0	66 509	-6,46%	-6,46%
Outgrowers												
Tolan Tiga Group	0				0	0				0	-	-
Umbul Mas Wisesa Group	32				32	0				0	-	-
Agro Muko Group	730				730	750				750	-2,67%	-2,67%
South Sumatra Group	105				105	64				64	64,06%	64,06%
Hargy Oil Palms	10 615				10 615	10 862				10 862	-2,27%	-2,27%
Total outgrowers	11 482	0	0	0	11 482	11 676	0	0	0	11 676	-1,66%	-1,66%
Total Palm Oil	73 692	0	0	0	73 692	78 185	0	0	0	78 185	-5,75%	-5,75%

Palm Kernels	Q1	Q2	Q3	Q4	YTD	Q1	Q2	Q3	Q4	YTD	Q1	YTD
Own												
Tolan Tiga Group	3 855				3 855	4 118				4 118	-6,39%	-6,39%
Umbul Mas Wisesa Group	1 444				1 444	1 576				1 576	-8,38%	-8,38%
Agro Muko Group	3 561				3 561	4 310				4 310	-17,38%	-17,38%
South Sumatra Group	543				543	213				213	154,93%	154,93%
Total own	9 403	0	0	0	9 403	10 217	0	0	0	10 217	-7,97%	-7,97%
Outgrowers												
Tolan Tiga Group	0				0	0				0	-	-
Umbul Mas Wisesa Group	4				4	0				0	-	-
Agro Muko Group	145				145	152				152	-4,61%	-4,61%
South Sumatra Group	21				21	16				16	31,25%	31,25%
Total outgrowers	170	0	0	0	170	168	0	0	0	168	1,19%	1,19%
Total Palm Kernels	9 573	0	0	0	9 573	10 385	0	0	0	10 385	-7,82%	-7,82%
Palm Kernel Oil	Q1	Q2	Q3	Q4	YTD	Q1	Q2	Q3	Q4	YTD	Q1	YTD
Hargy Oil Palms Own	1 526				1 526	1 616				1 616	-5,57%	-5,57%
Hargy Oil Palms Outgrowers	986				986	926				926	6,48%	6,48%
Total Palm Kernel Oil	2 512	0	0	0	2 512	2 542	0	0	0	2 542	-1,18%	-1,18%
Rubber	Q1	Q2	Q3	Q4	YTD	Q1	Q2	Q3	Q4	YTD	Q1	YTD
Own												
Tolan Tiga Group	486				486	643				643	-24,42%	-24,42%
Melania	963				963	965				965	-0,21%	-0,21%
Agro Muko	600				600	686				686	-12,54%	-12,54%
Total Rubber	2 049	0	0	0	2 049	2 294	0	0	0	2 294	-10,68%	-10,68%
Tea	Q1	Q2	Q3	Q4	YTD	Q1	Q2	Q3	Q4	YTD	Q1	YTD
Melania	738				738	595				595	24,03%	24,03%
Total Tea	738	0	0	0	738	595	0	0	0	595	24,03%	24,03%
Bananas	Q1	Q2	Q3	Q4	YTD	Q1	Q2	Q3	Q4	YTD	Q1	YTD
Azaguie 1	1 440				1 440	1 345				1 345	7,06%	7,06%
Azaguie 2	2 497				2 497	2 395				2 395	4,26%	4,26%
Agboville	2 349				2 349	2 038				2 038	15,26%	15,26%
Motobe	2 466				2 466	1 538				1 538	60,34%	60,34%
Total Bananas	8 752	0	0	0	8 752	7 316	0	0	0	7 316	19,63%	19,63%

Commodity Price Data March 2019

Average market prices

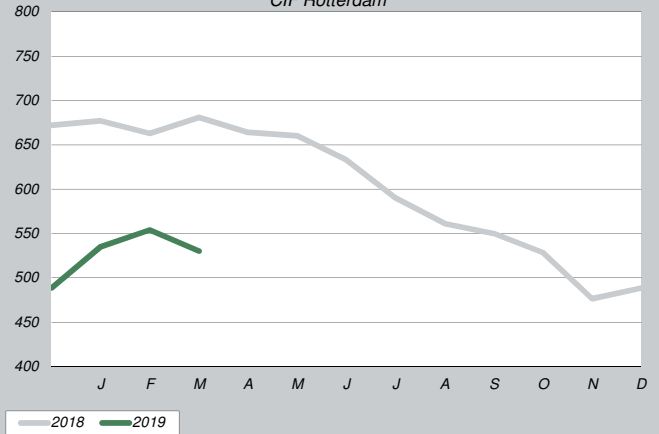
Product	YTD Q1/2019	YTD Q1/2018	YTD Q4/2018
CPO (CIF Rotterdam)* in \$/mt	540	674	598
CPKO (CIF Rotterdam)* in \$/mt	712	1 143	921
RSS3 (FOB Singapore)** in \$/mt	1 656	1 733	1 565
Tea (avg auct Mombasa)** in \$/mt	2 187	2 917	2 579
Bananas (CFR Europe)*** in \$/mt	686	766	647

* Oil World price data

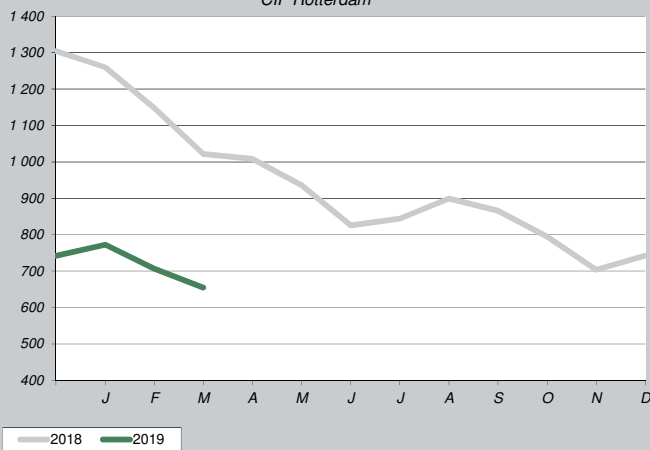
** World bank commodity price data - updated database

*** CIRAD price data (in EUR)

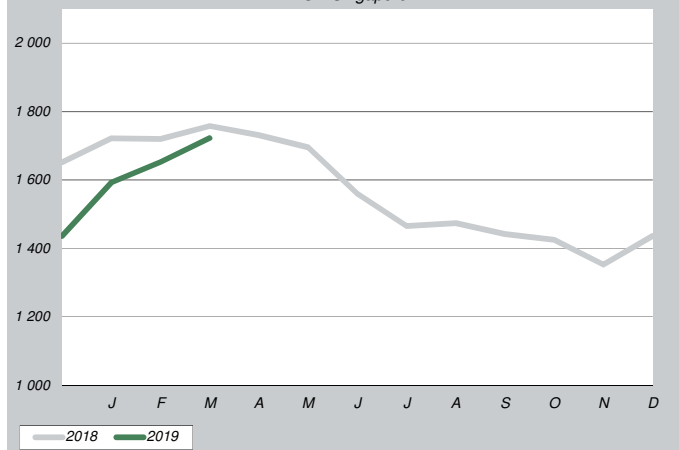
Crude Palm Oil in \$/mt
CIF Rotterdam



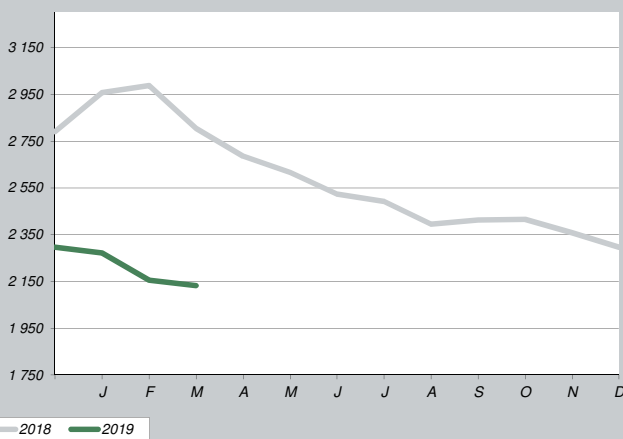
Crude Palm Kernel Oil in \$/mt
CIF Rotterdam



RSS3 in \$/mt
FOB Singapore



Tea in \$/mt
average auction Mombasa



Bananas EU in \$/mt

