

# PRESS RELEASE 2016

Regulated information | December 2016



## Group production of the SIPEF Group (in tonnes)

Palm Oil	2016					2015					YoY Variation	
	Q1	Q2	Q3	Q4	YTD	Q1	Q2	Q3	Q4	YTD	Q4	YTD
<b>Own</b>												
Tolan Tiga Group	12 727	13 634	19 643	17 951	63 955	13 146	16 765	22 190	17 196	69 297	4.39%	-7.71%
UMW/TUM Group *	8 053	9 096	10 808	9 264	37 221	5 240	7 332	7 348	7 869	27 789	17.73%	33.94%
Agro Muko	16 486	18 369	20 873	20 357	76 085	16 033	18 700	22 471	20 436	77 640	-0.39%	-2.00%
Hargy Oil Palms	16 021	18 038	11 768	23 033	68 860	14 203	17 255	14 484	17 880	63 822	28.82%	7.89%
<b>Total own</b>	<b>53 287</b>	<b>59 137</b>	<b>63 092</b>	<b>70 605</b>	<b>246 121</b>	<b>48 622</b>	<b>60 052</b>	<b>66 493</b>	<b>63 381</b>	<b>238 548</b>	<b>11.40%</b>	<b>3.17%</b>
<b>Outgrowers</b>												
Tolan Tiga Group	162	245	234	262	903	0	43	87	150	280	74.67%	222.50%
UMW/TUM Group	76	159	104	5	344	36	311	300	11	658	-54.55%	-47.72%
Agro Muko	367	414	460	471	1 712	359	436	501	447	1 743	5.37%	-1.78%
Hargy Oil Palms	12 554	13 017	7 614	15 440	48 625	11 524	13 802	11 034	13 318	49 678	15.93%	-2.12%
<b>Total outgrowers</b>	<b>13 159</b>	<b>13 835</b>	<b>8 412</b>	<b>16 178</b>	<b>51 584</b>	<b>11 919</b>	<b>14 592</b>	<b>11 922</b>	<b>13 926</b>	<b>52 359</b>	<b>16.17%</b>	<b>-1.48%</b>
<b>Total Palm Oil</b>	<b>66 446</b>	<b>72 972</b>	<b>71 504</b>	<b>86 783</b>	<b>297 705</b>	<b>60 541</b>	<b>74 644</b>	<b>78 415</b>	<b>77 307</b>	<b>290 907</b>	<b>12.26%</b>	<b>2.34%</b>
<b>Palm Kernels</b>	<b>Q1</b>	<b>Q2</b>	<b>Q3</b>	<b>Q4</b>	<b>YTD</b>	<b>Q1</b>	<b>Q2</b>	<b>Q3</b>	<b>Q4</b>	<b>YTD</b>	<b>Q4</b>	<b>YTD</b>
<b>Own</b>												
Tolan Tiga Group	3 228	3 473	4 839	4 620	16 160	3 214	3 772	5 291	4 387	16 664	5.31%	-3.02%
UMW/TUM Group *	1 341	1 477	1 770	1 520	6 108	873	1 133	965	1 098	4 069	38.43%	50.11%
Agro Muko	3 865	4 324	4 901	4 709	17 799	3 797	4 380	5 307	4 779	18 263	-1.46%	-2.54%
<b>Total own</b>	<b>8 434</b>	<b>9 274</b>	<b>11 510</b>	<b>10 849</b>	<b>40 067</b>	<b>7 884</b>	<b>9 285</b>	<b>11 563</b>	<b>10 264</b>	<b>38 996</b>	<b>5.70%</b>	<b>2.75%</b>
<b>Outgrowers</b>												
Tolan Tiga Group	37	57	55	60	209	0	10	20	35	65	71.43%	221.54%
UMW/TUM Group	16	32	21	1	70	6	71	79	2	158	-50.00%	-55.70%
Agro Muko	70	82	91	90	333	69	90	102	86	347	4.65%	-4.03%
<b>Total outgrowers</b>	<b>123</b>	<b>171</b>	<b>167</b>	<b>151</b>	<b>612</b>	<b>75</b>	<b>171</b>	<b>201</b>	<b>123</b>	<b>570</b>	<b>22.76%</b>	<b>7.37%</b>
<b>Total Palm Kernels</b>	<b>8 557</b>	<b>9 445</b>	<b>11 677</b>	<b>11 000</b>	<b>40 679</b>	<b>7 959</b>	<b>9 456</b>	<b>11 764</b>	<b>10 387</b>	<b>39 566</b>	<b>5.90%</b>	<b>2.81%</b>
<b>Palm Kernel Oil</b>	<b>Q1</b>	<b>Q2</b>	<b>Q3</b>	<b>Q4</b>	<b>YTD</b>	<b>Q1</b>	<b>Q2</b>	<b>Q3</b>	<b>Q4</b>	<b>YTD</b>	<b>Q4</b>	<b>YTD</b>
<b>Own</b>												
Hargy Oil Palms	1 392	1 638	1 069	1 843	5 942	1 074	1 310	1 173	1 588	5 145	16.06%	15.49%
<b>Total own</b>	<b>1 392</b>	<b>1 638</b>	<b>1 069</b>	<b>1 843</b>	<b>5 942</b>	<b>1 074</b>	<b>1 310</b>	<b>1 173</b>	<b>1 588</b>	<b>5 145</b>	<b>16.06%</b>	<b>15.49%</b>
<b>Outgrowers</b>												
Hargy Oil Palms	1 124	1 326	606	1 309	4 365	917	1 148	884	952	3 901	37.50%	11.89%
<b>Total outgrowers</b>	<b>1 124</b>	<b>1 326</b>	<b>606</b>	<b>1 309</b>	<b>4 365</b>	<b>917</b>	<b>1 148</b>	<b>884</b>	<b>952</b>	<b>3 901</b>	<b>37.50%</b>	<b>11.89%</b>
<b>Total Palm Kernel Oil</b>	<b>2 516</b>	<b>2 964</b>	<b>1 675</b>	<b>3 152</b>	<b>10 307</b>	<b>1 991</b>	<b>2 458</b>	<b>2 057</b>	<b>2 540</b>	<b>9 046</b>	<b>24.09%</b>	<b>13.94%</b>

\* an equivalent of 2 455 tonnes of palm oil have been sold to a neighbouring palm oil mill

## Group production of the SIPEF Group (in tonnes)

	2016					2015					YoY Variation	
	Q1	Q2	Q3	Q4	YTD	Q1	Q2	Q3	Q4	YTD	Q4	YTD
<b>Rubber</b>												
<b>Own</b>												
Tolan Tiga Group	804	568	803	939	3 114	820	604	813	981	3 218	-4.28%	-3.23%
Melania	797	1 206	461	761	3 225	1 005	1 230	417	413	3 065	84.26%	5.22%
Agro Muko	489	538	417	402	1 846	445	489	377	352	1 663	14.20%	11.00%
Galley Reach	436	396	0	0	832	530	392	420	334	1 676	-100.00%	-50.36%
<b>Total own</b>	<b>2 526</b>	<b>2 708</b>	<b>1 681</b>	<b>2 102</b>	<b>9 017</b>	<b>2 800</b>	<b>2 715</b>	<b>2 027</b>	<b>2 080</b>	<b>9 622</b>	<b>1.06%</b>	<b>-6.29%</b>
<b>Outgrowers</b>												
Agro Muko	0	0	0	0	0	0	0	0	0	0	-	-
Galley Reach	62	113	0	0	175	40	111	160	136	447	-100.00%	-60.85%
<b>Total outgrowers</b>	<b>62</b>	<b>113</b>	<b>0</b>	<b>0</b>	<b>175</b>	<b>40</b>	<b>111</b>	<b>160</b>	<b>136</b>	<b>447</b>	<b>-100.00%</b>	<b>-60.85%</b>
<b>Total Rubber</b>	<b>2 588</b>	<b>2 821</b>	<b>1 681</b>	<b>2 102</b>	<b>9 192</b>	<b>2 840</b>	<b>2 826</b>	<b>2 187</b>	<b>2 216</b>	<b>10 069</b>	<b>-5.14%</b>	<b>-8.71%</b>
<b>Tea</b>												
<b>Own</b>												
Melania	793	714	754	679	2 940	740	784	495	707	2 726	-3.96%	7.85%
<b>Total own</b>	<b>793</b>	<b>714</b>	<b>754</b>	<b>679</b>	<b>2 940</b>	<b>740</b>	<b>784</b>	<b>495</b>	<b>707</b>	<b>2 726</b>	<b>-3.96%</b>	<b>7.85%</b>
<b>Outgrowers</b>												
Melania	0	0	0	0	0	0	0	0	0	0	-	-
<b>Total outgrowers</b>	<b>0</b>	<b>0</b>	<b>0</b>	<b>0</b>	<b>0</b>	<b>0</b>	<b>0</b>	<b>0</b>	<b>0</b>	<b>0</b>	<b>-</b>	<b>-</b>
<b>Total Tea</b>	<b>793</b>	<b>714</b>	<b>754</b>	<b>679</b>	<b>2 940</b>	<b>740</b>	<b>784</b>	<b>495</b>	<b>707</b>	<b>2 726</b>	<b>-3.96%</b>	<b>7.85%</b>
<b>Bananas</b>												
Azaguie	1 506	995	1 444	1 371	5 316	1 463	1 176	1 188	1 145	4 972	19.74%	6.92%
St. Thérèse	714	832	949	1 364	3 859	0	0	0	0	0	-	-
Agboville	2 657	2 124	2 670	2 361	9 812	2 900	2 354	2 626	2 733	10 613	-13.61%	-7.55%
Motobe	1 894	1 464	1 470	1 176	6 004	2 702	2 256	2 016	1 727	8 701	-31.91%	-31.00%
<b>Total Bananas</b>	<b>6 771</b>	<b>5 415</b>	<b>6 533</b>	<b>6 272</b>	<b>24 991</b>	<b>7 065</b>	<b>5 786</b>	<b>5 830</b>	<b>5 605</b>	<b>24 286</b>	<b>11.90%</b>	<b>2.90%</b>

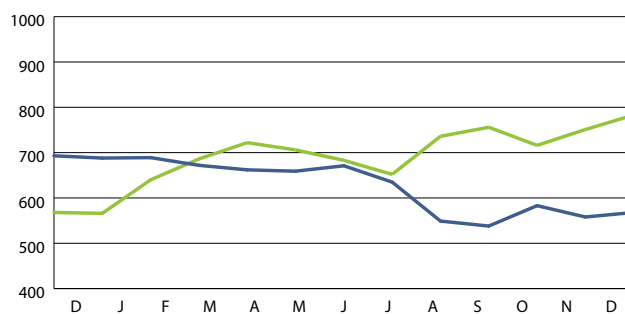
## Commodity Price Data

### Average market prices\*

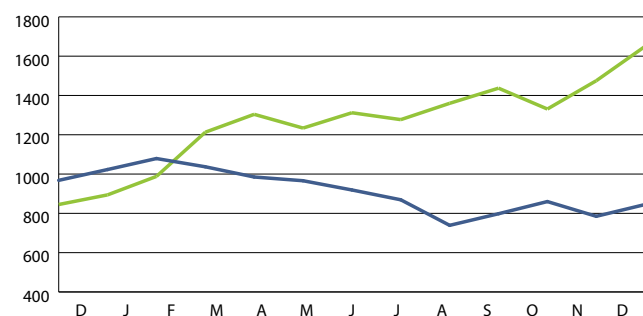
Product		YTD Q4/2016	YTD Q4/2015
CPO (CIF Rotterdam)	in \$/mt	700	623
CPKO (CIF Rotterdam)	in \$/mt	1 290	909
RSS3 (FOB Singapore)	in \$/mt	1 605	1 559
Tea (avg auct Mombasa)	in \$/mt	2 298	2 742
Bananas (FOT Europe)	in \$/mt	905	903

\* World Bank Commodity Price Data

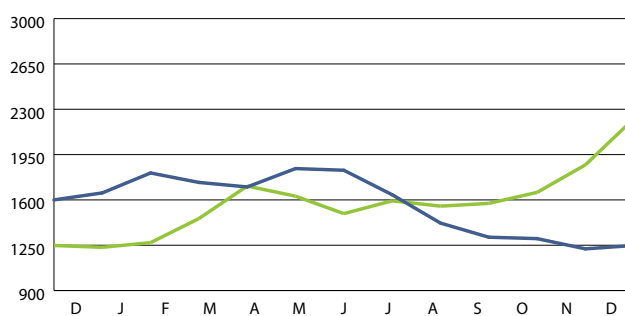
Crude Palm Oil in \$/mt  
CIF Rotterdam



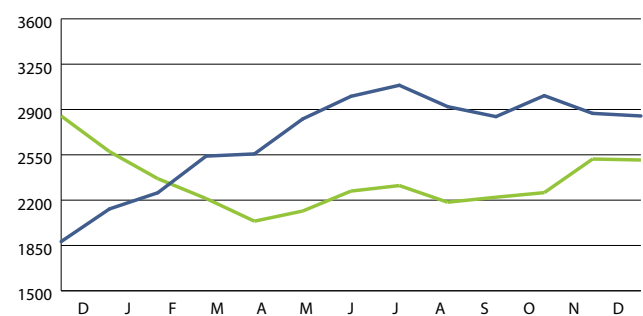
Crude Palm Kernel Oil in \$/mt  
CIF Rotterdam



RSS3 in \$/mt  
FOB Singapore



Tea in \$/mt  
average auct. Mombasa



Bananas EU in \$/mt  
FOT Europe

